

# The Depot

## Proposals 2012:

We are considering proposals for exhibitions, events & festivals in 2012.

In this proposal we invite you to tell us about your ideas. Once accepted, details regarding costs, times etc will be covered in your contract.

The Depot is a thriving creative community in Devonport. With a clear vision, strong philosophy of inclusiveness and a large helping of community can-do The Depot offers a variety of facilities and services to support and nourish the creative spirit. We look forward to reading your creative proposal.

### Details:

Your name:

Phone/Cell:

Email:

Street:

Suburb:

City:

Postcode:

Title of Exhibition/Event:

Proposed dates (if known):

Proposed duration (if known):

### Supporting Documents:

Please attach any supporting documents to this proposal. These may include images or examples of your work or ideas. Please only attach copies, we are unable to return originals.

### Questions?

If you need any assistance with this process please contact Federico

Ph – 963 2331

Email – [proposals@depotartspace.co.nz](mailto:proposals@depotartspace.co.nz)

Web – [www.depotartspace.co.nz](http://www.depotartspace.co.nz)

The Depot, 28 Clarence St, Devonport, Auckland. PH: 09 963 2331 [www.depoartspace.co.nz](http://www.depoartspace.co.nz)

.....creating an environment that encourages creating.....

# The Depot

**Spaces available:** Costs may vary – please contact us to discuss.

## The Depot: Main Gallery

**Cost** \$350 ex gst per week plus The Depot's low commission rate of 25%+gst

**Includes:** assistance from The Depot with promotion, staffing, installation, hanging, fliers.

## The Depot: Outerspace Gallery

**Cost** • \$100 ex gst (\$115 incl) per week per gallery plus The Depot's low commission rate of 25%+gst

**Includes:** assistance from The Depot with promotion, staffing, installation, hanging, fliers.

## Kerr St Artspace Gallery

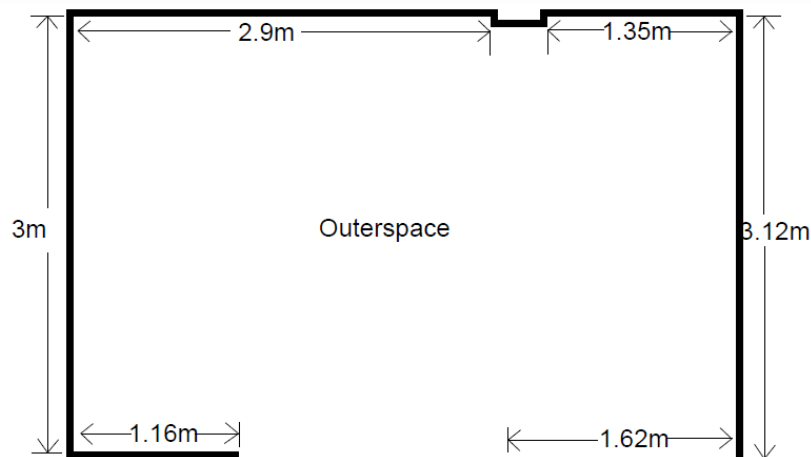
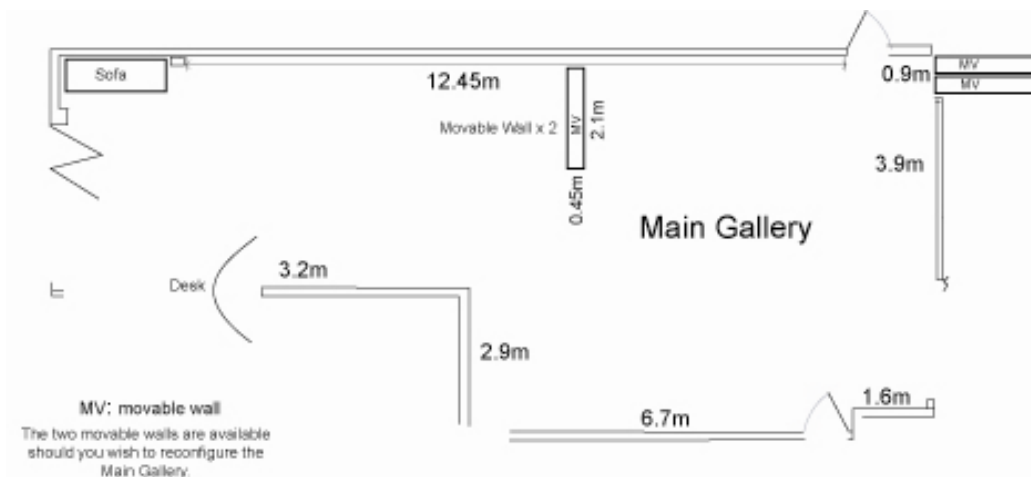
**Cost** • \$100 ex gst (\$115 incl) per week per gallery plus The Depot's low commission rate of 25%+gst

**Includes:** assistance from The Depot with promotion, staffing, installation, hanging, fliers.

## Kerr St Artspace Main Hall

**Cost** • To be discussed.

**Includes:** assistance from The Depot with promotion, staffing, installation, hanging, fliers.



The Depot, 28 Clarence St, Devonport, Auckland. PH: 09 963 2331 [www.depoartspace.co.nz](http://www.depoartspace.co.nz)

.....creating an environment that encourages creating.....

# The Depot

## Tell us about your proposal:

### **1. What are you proposing? Is it a festival, an event or series of events or is it an exhibition?**

NB. It can be a great idea to align your event/exhibition to an existing festival such as the Devonport Wine & Food Festival, Auckland Photography Festival or Matariki celebrations. You could even start your own Festival and encourage others to take part; a Slow Art Festival, a Celebration of Domestic Ware or of Small Animals. Your Festival could become a national phenomenon!

### **2. What is your artist/exhibition/event statement?**

NB. Tell us what you hope to achieve, explore, discover, share and/or contribute with your event/exhibition.

# The Depot

**3. If you are proposing an exhibition, what could you offer or suggest to engage and build your audience?**

EG. Artists' talks, workshops or other complementary community events. The Depot is a multidisciplinary creative community and we encourage participation and inclusiveness. The more the merrier!

**5. Are you or your co-organisers able to spend time in the gallery/space during your programme?**

Audiences like to meet the artists/organiser and their community, this encourages further attendance.

**6. What are your ideas for promotion before and during your event/exhibition/festival?**

NB. Promotion is a vital part of putting on a great show. Who might you contact? How?

**Thank you.**

The Depot, 28 Clarence St, Devonport, Auckland. PH: 09 963 2331 [www.depoartspace.co.nz](http://www.depoartspace.co.nz)

.....creating an environment that encourages creating.....

# The Depot

## THE DEPOT GALLERIES: DIFFERENT BUT THE SAME

Over fifteen years the Depot has grown from a large sieve with a dubious reputation (rumour had it we grew marijuana hydroponically in our fire egress) into a lively and diverse creative community.

This growth has been the combination of vision, significant community support and the capacity not only to respond to change, but to predict and prepare for it. It has been the factor that has sustained it through the vagaries of life.

In these economically challenging times and in the unfamiliar and largely uncharted territory of a large Auckland metropolis, the Depot is tightening its belt and at the same time finding new, innovative and, dare we say, exciting ways to remain inclusive and accessible, two principles that have guided the Depot since its inception 15 years ago.

The Depot's experience of the changing economy must, in many ways, mirror that of its community, and it is important therefore that no significant onus is placed on those who support, and are in turn supported by, the Depot.

Thus the emphasis is directed to creating opportunities that reduce internal administration and staff time whilst increasing artist involvement in the planning of, and participation in, a greater variety of exhibitions, projects or events.

There will be more themed exhibitions that tie in to Auckland-wide events such as the Photographic Festival, Matariki, Hero Festival and Fashion Week, which are likely to include a group of artists. City-wide events tend to attract more visitors who like to take in the diverse shows in different venues around the city. You could even start your own Festival and encourage others to take part; a Slow Art Festival, a Celebration of Domestic Ware or of Small Animals. Your Festival could become a national phenomenon!

There will be more collaboration within the local community and more promotion of the local. In a burgeoning, often alienating, metropolis, communities need to showcase and celebrate their distinctiveness and their cohesiveness. A "camaraderie of collusion" can strengthen the arts and also create a greater sense of place and belonging.

Kerr St Artspace will also provide self-managed exhibiting spaces, along with opportunities for theatre and literary events. Formerly a band rehearsal space, this venue has superb views, easy parking, and a variety of usable spaces.

There will be continued availability of the gallery for group and solo shows and bookings and these will be considered with regard to criteria that represent the Depot's primary principle of inclusiveness. Consideration will also be given in these challenging times to the viability of an exhibition, both for the artists' and the Depot's sake. Gallery hireage in no way meets operational costs for the Depot and there is currently no certainty of the Council's ongoing commitment to funding beyond the next financial year; and yet hireage is a significant outlay for an artist who hopes at the very least to cover their costs through sales of works.

In these times the Depot and its community need to find the middle way between sustainability and survivability, while celebrating the arts and supporting the arts community. Thus, any proposal will be given careful consideration by a group whose intentions will be to assist with the most viable opportunities for exhibiting or presenting your work.

The Depot, 28 Clarence St, Devonport, Auckland. PH: 09 963 2331 [www.depoartspace.co.nz](http://www.depoartspace.co.nz)

.....creating an environment that encourages creating.....